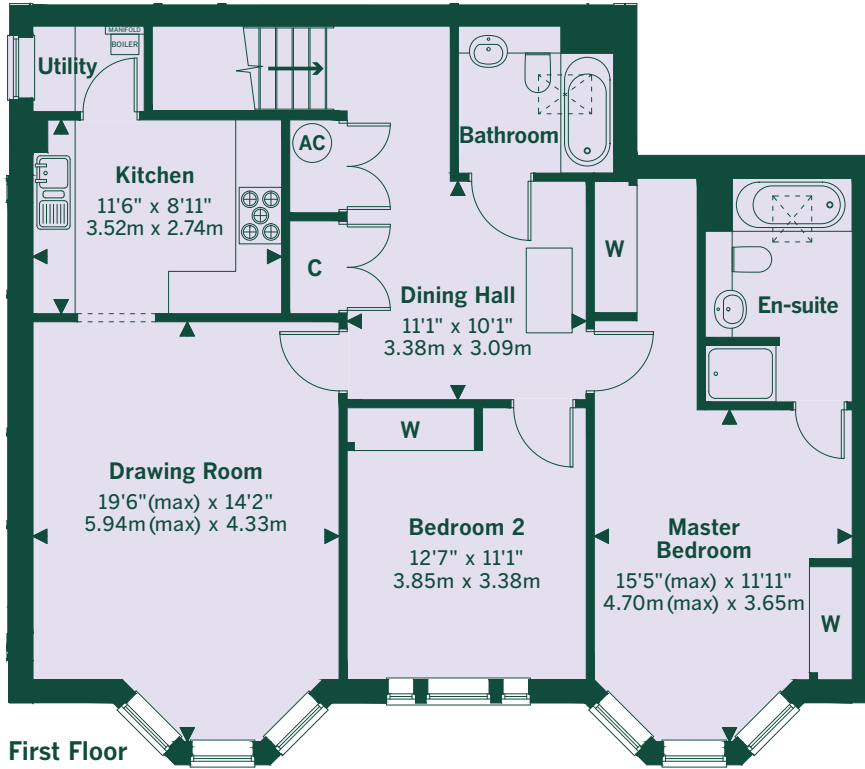
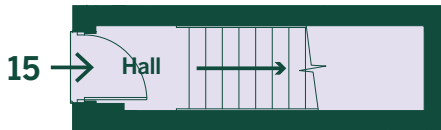


# 15 Seymour Court

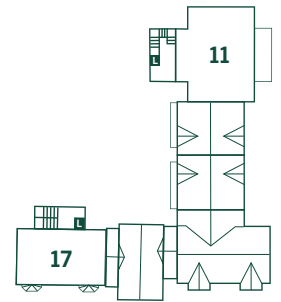
Two-bedroom first floor apartment



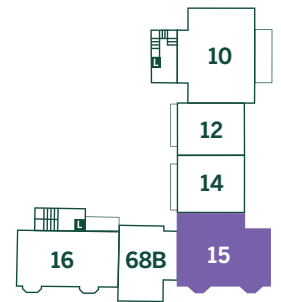
## Ground Floor



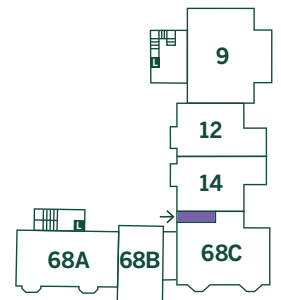
First Floor



Second Floor



First Floor



Ground Floor

L - Lift

Drawing is not to scale.  
Landscaping is indicative only.

**Seymour Court**  
Park Street  
Thame  
Oxfordshire  
OX9 3HU

01844 216827  
sales@beechcroft.co.uk  
beechcroft.co.uk

Sat Nav OX9 3HU

**Beechcroft**  
DESIGNED WITH RETIREMENT IN MIND