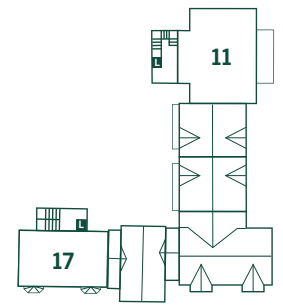
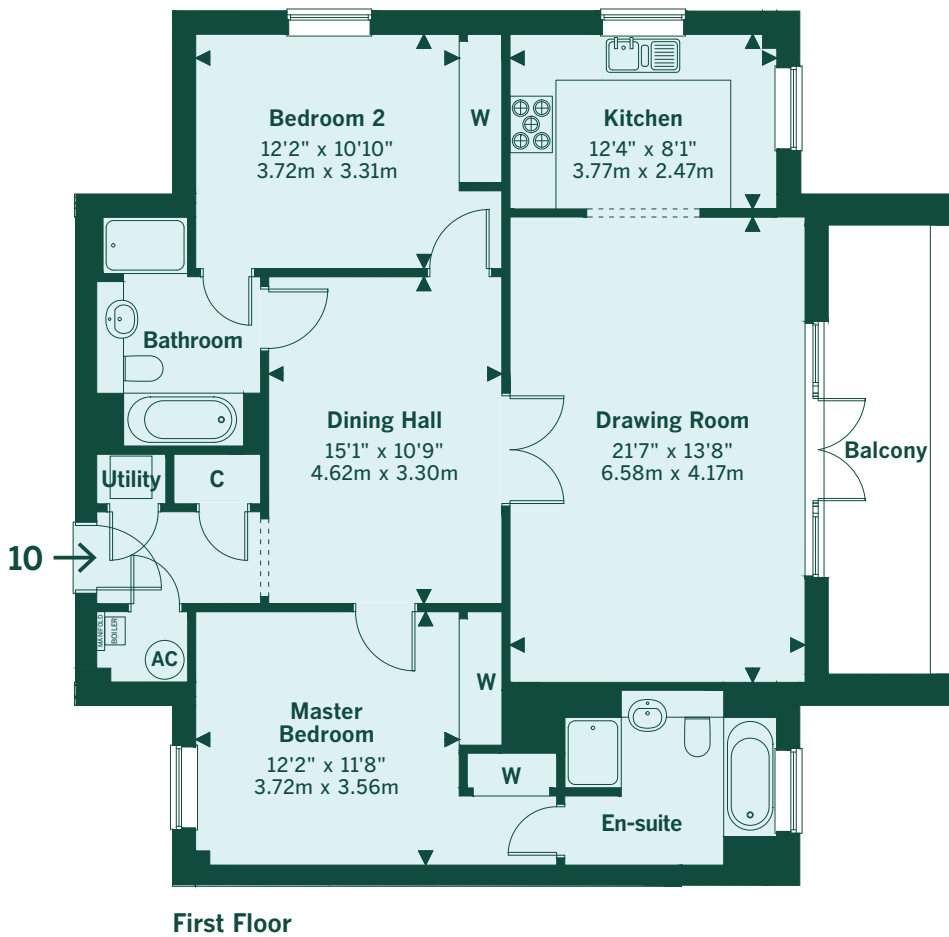
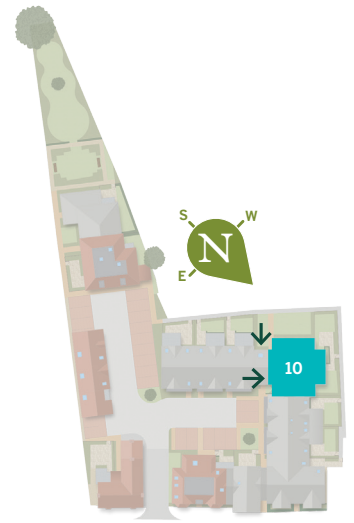
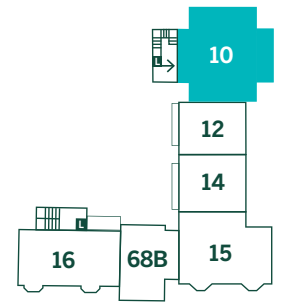


10 Seymour Court

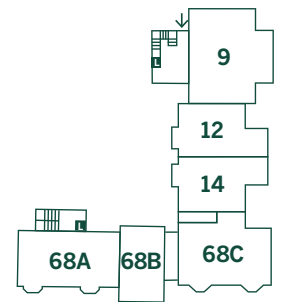
Two-bedroom first floor apartment with balcony



Second Floor



First Floor



Ground Floor

L - Lift

Drawing is not to scale.
Landscaping is indicative only.

Seymour Court
Park Street
Thame
Oxfordshire
OX9 3HU

01844 216827
sales@beechcroft.co.uk
beechcroft.co.uk

Sat Nav OX9 3HU

Beechcroft
DESIGNED WITH RETIREMENT IN MIND