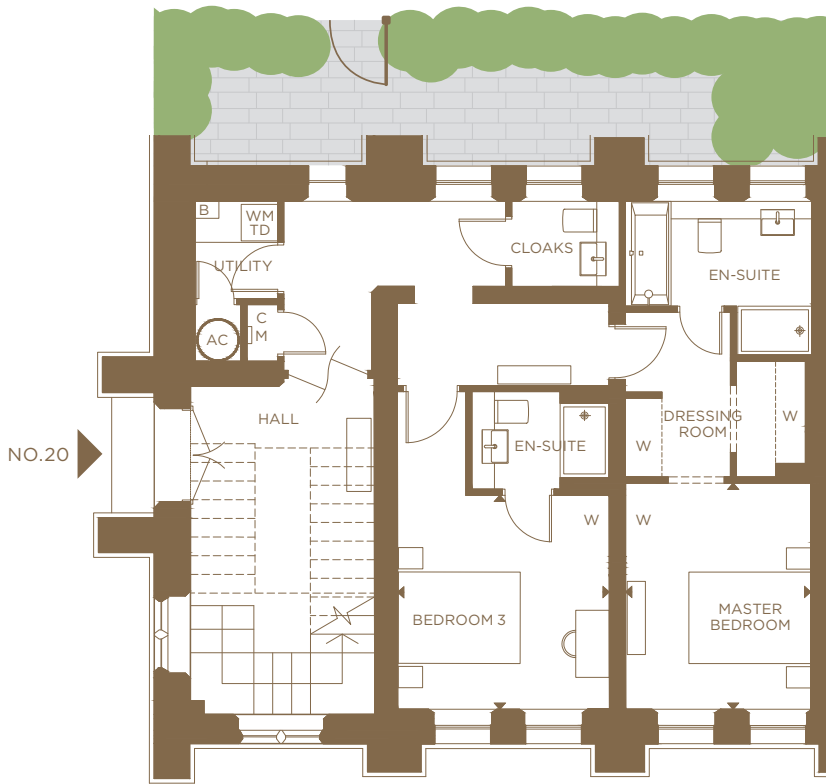


Total Gross Area 204m<sup>2</sup> 2196sq ft

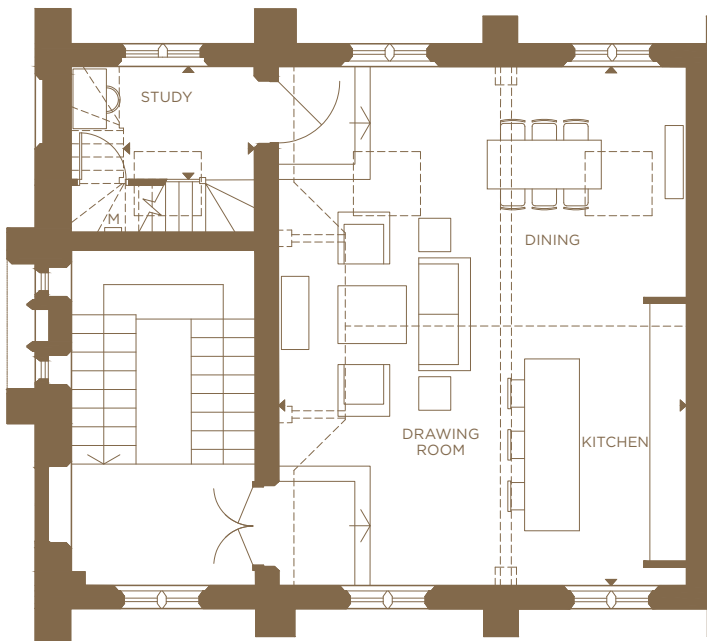


GROUND FLOOR

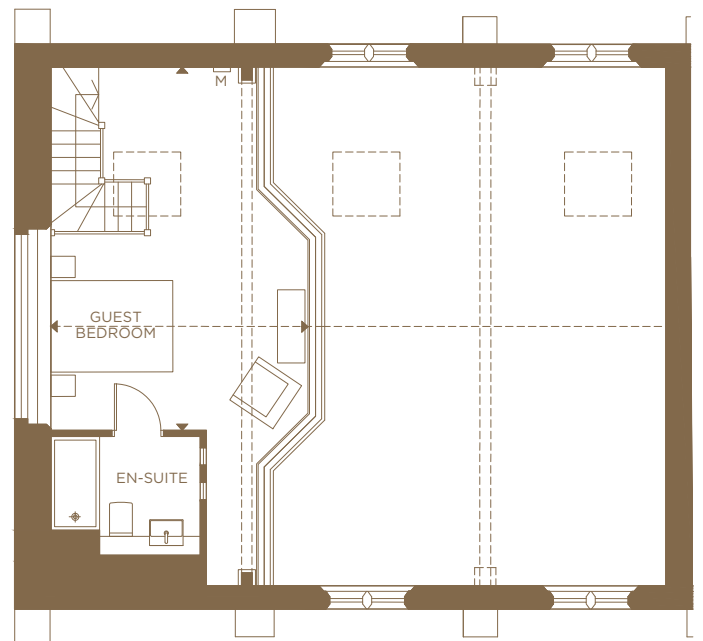
<b>KITCHEN/DINING/DRAWING ROOM</b>	8.515m x 6.690m	27'11" x 21'11"
<b>STUDY</b>	2.145m x 1.850m	7'0" x 6'0"
<b>MASTER BEDROOM</b>	3.710m x 3.035m	12'2" x 9'11"
<b>GUEST BEDROOM</b>	5.960m x 4.215m	19'6" x 13'9"
<b>BEDROOM 3</b>	3.510m x 3.470m	11'6" x 11'4"

Dimensions are approximate and are measured finish to finish.

- C CUPBOARD
- W WARDROBE
- ◀▶ MEASUREMENT POINTS



FIRST FLOOR



SECOND FLOOR

*No.20 | 3 Bedrooms*  
**THE CHAPEL**

A three-storey converted apartment with three en-suite bedrooms, stunning first floor living space, stained glass windows and a minstrel-gallery mezzanine level with an attractive circular window.

**Beechcroft**

*Fitzroy Gate Sales and Marketing Suite*

RICHMOND ROAD OLD ISLEWORTH TW7 7BP

020 3326 1233 | SALES.FITZROYGATE@BEEHCROFT.CO.UK | FITZROYGATE.CO.UK