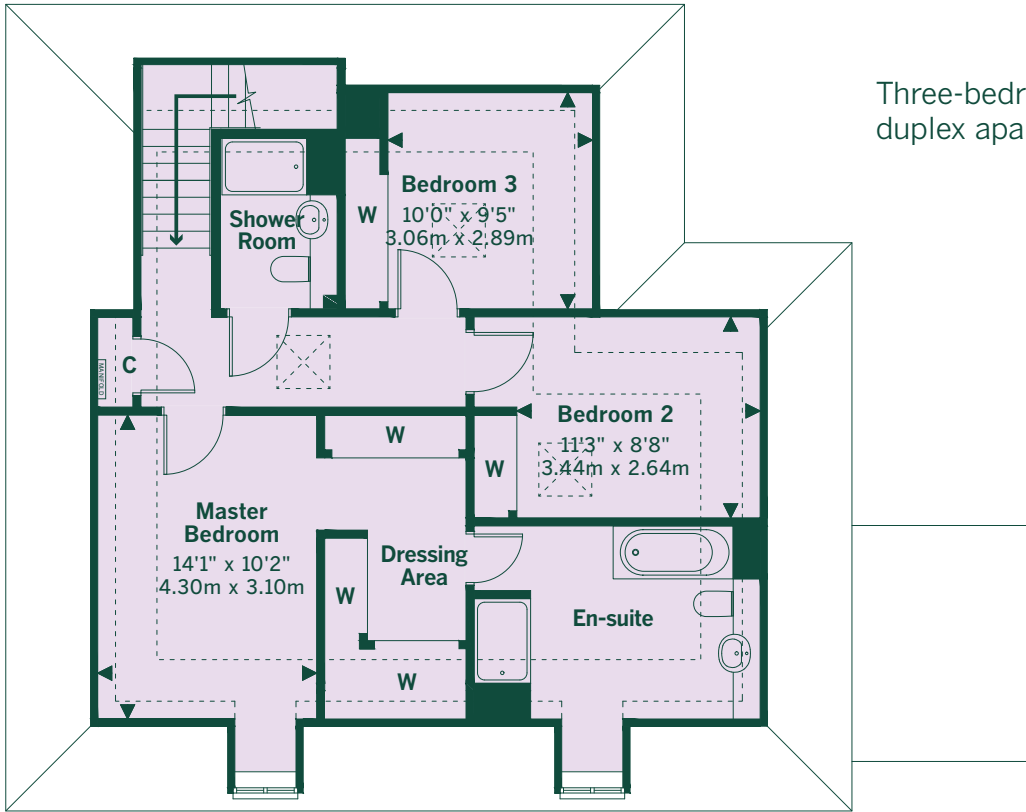
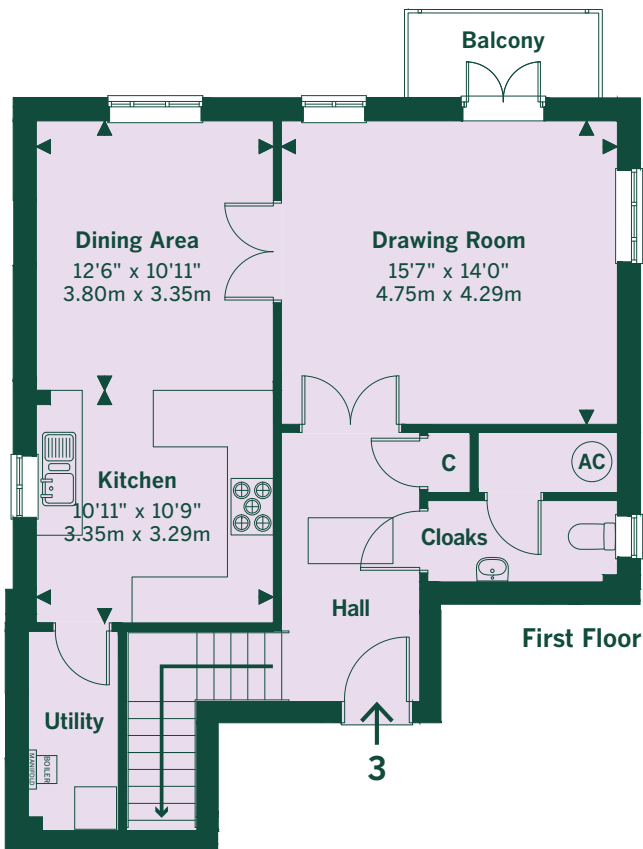
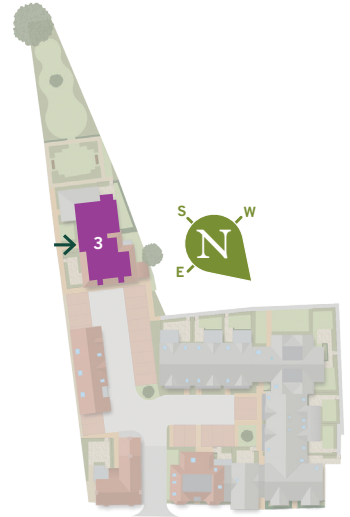


3 Seymour Court

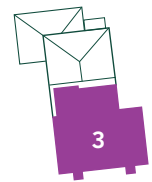
Three-bedroom first and second floor duplex apartment with balcony



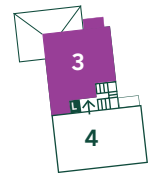
Second Floor



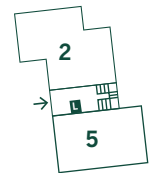
First Floor



Second Floor



First Floor



Ground Floor

L - Lift

Drawing is not to scale.
Landscaping is indicative only.

Seymour Court
Park Street
Thame
Oxfordshire
OX9 3HU

01844 216827
sales@beechcroft.co.uk
beechcroft.co.uk

Sat Nav OX9 3HU

Beechcroft
DESIGNED WITH RETIREMENT IN MIND