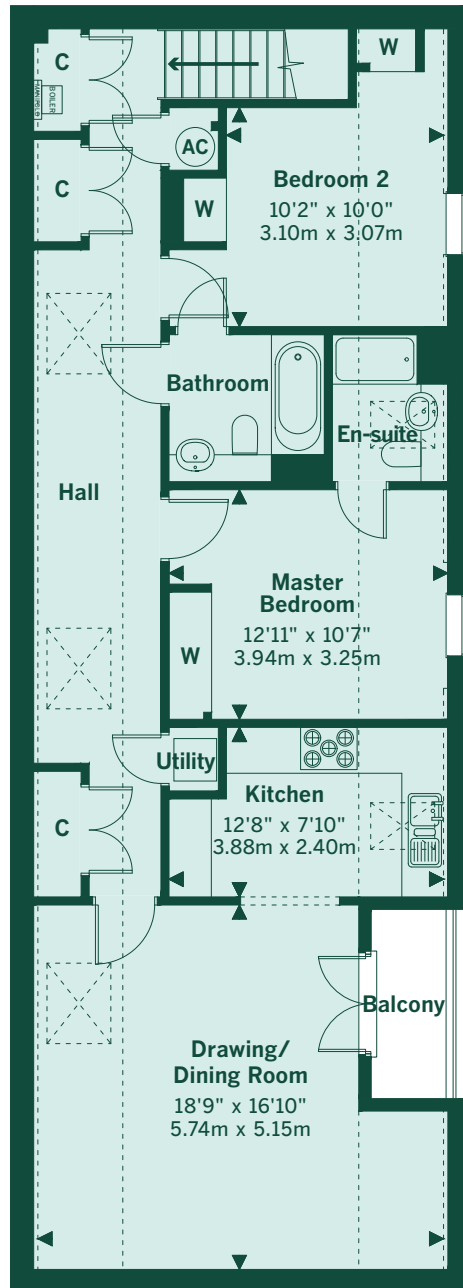
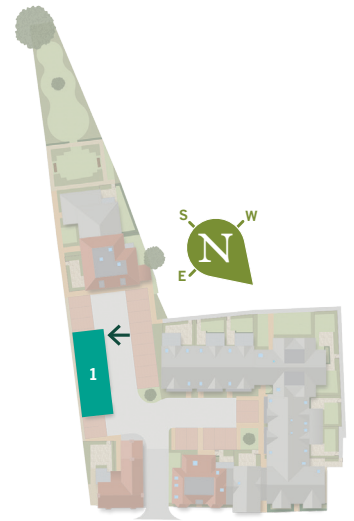
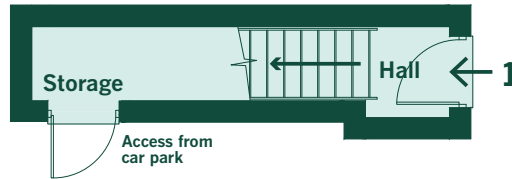


1 Seymour Court

Two-bedroom first floor apartment with balcony

Ground Floor



First Floor



First Floor



Ground Floor

Drawing is not to scale.
Landscaping is indicative only.

Seymour Court
Park Street
Thame
Oxfordshire
OX9 3HU

01844 216827
sales@beechcroft.co.uk
beechcroft.co.uk

Sat Nav OX9 3HU

Beechcroft
DESIGNED WITH RETIREMENT IN MIND