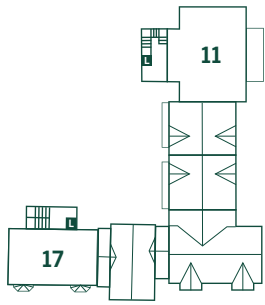
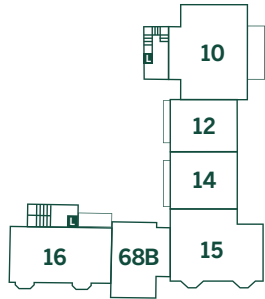


68C Park Street

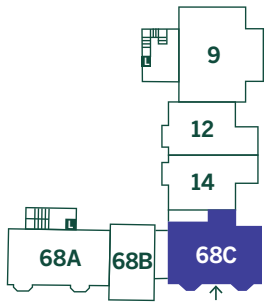
Two-bedroom ground floor apartment with terrace



Second Floor

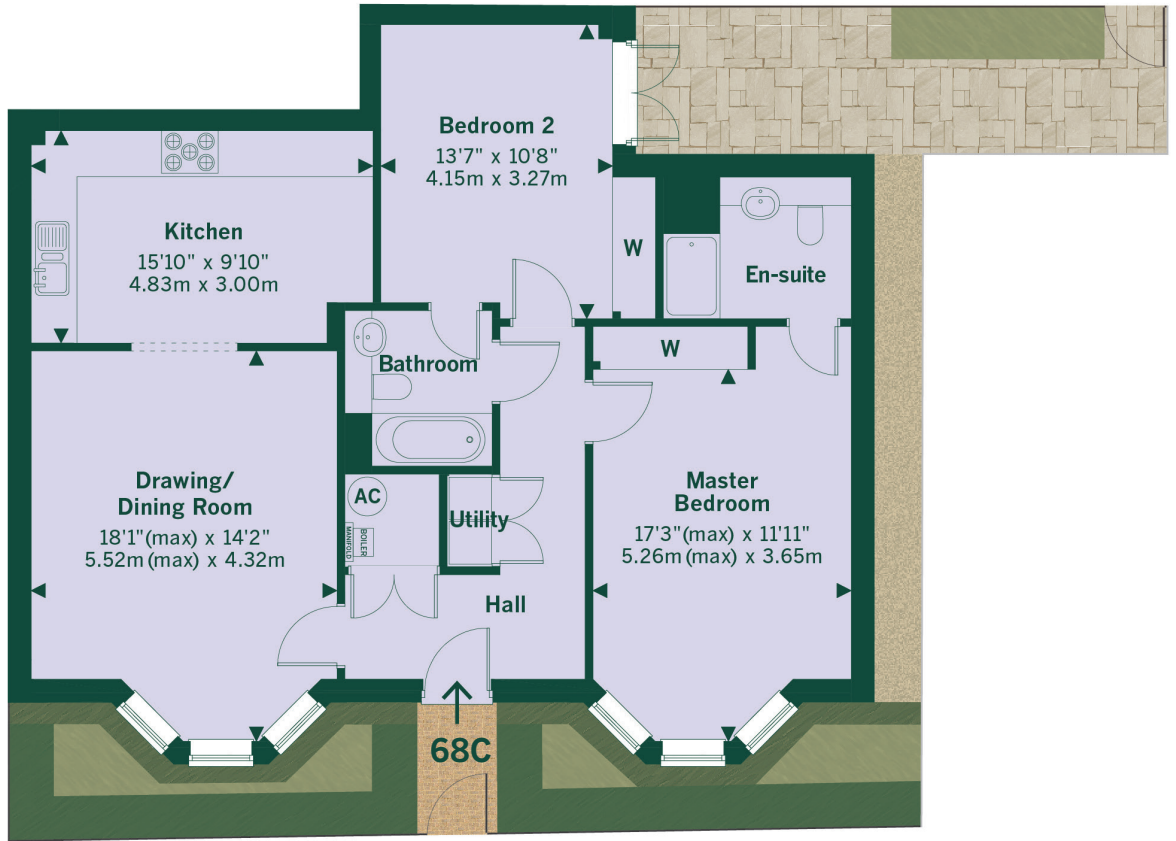


First Floor



Ground Floor

L - Lift



Ground Floor

Drawing is not to scale.
Landscaping is indicative only.

Seymour Court
Park Street
Thame
Oxfordshire
OX9 3HU

01844 216827
sales@beechcroft.co.uk
beechcroft.co.uk

Sat Nav OX9 3HU

Beechcroft
DESIGNED WITH RETIREMENT IN MIND