

Total Gross Area

76m²

818sq ft

KITCHEN/DINING/
DRAWING ROOM

5.590m x 4.605m
18'4" X 15'1"

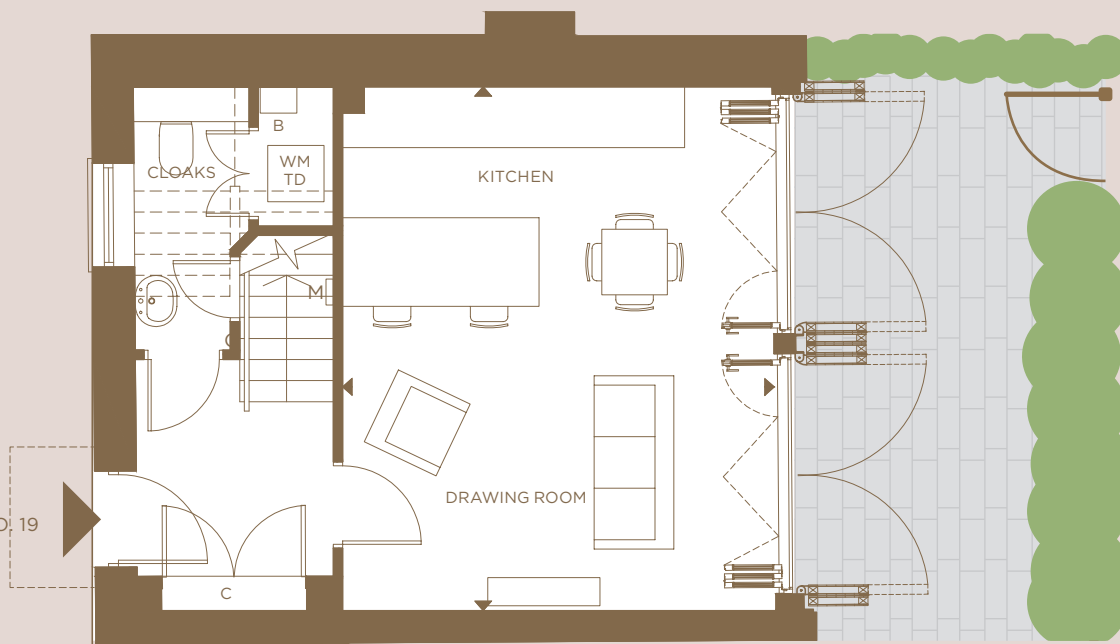
MASTER BEDROOM

3.630m x 2.990m
11'10" X 9'9"

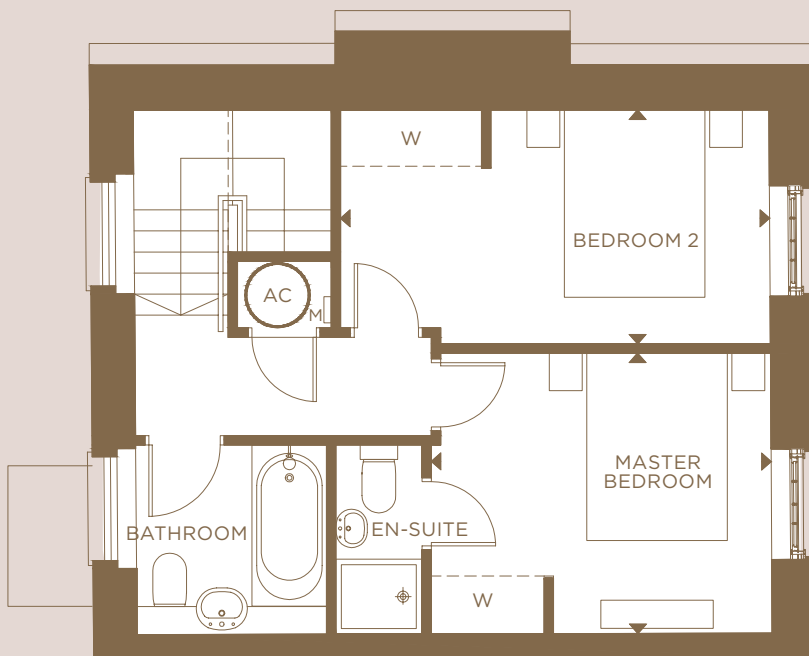
BEDROOM 2

4.580m x 2.495m
15'0" x 8'2"

Dimensions are approximate and
are measured finish to finish.



GROUND FLOOR



FIRST FLOOR



- C CUPBOARD
- W WARDROBE
- ◄► MEASUREMENT POINTS

House No.19 | 2 Bedrooms

THE MEWS

A two-bedroom, two-storey converted house with an en-suite master bedroom and open plan living area featuring floor-to-ceiling bi-fold doors leading onto the private terrace.

Beechcroft

Fitzroy Gate Sales and Marketing Suite

RICHMOND ROAD OLD ISLEWORTH TW7 7BP

020 3326 1233 | SALES.FITZROYGATE@BEEHCROFT.CO.UK | FITZROYGATE.CO.UK